



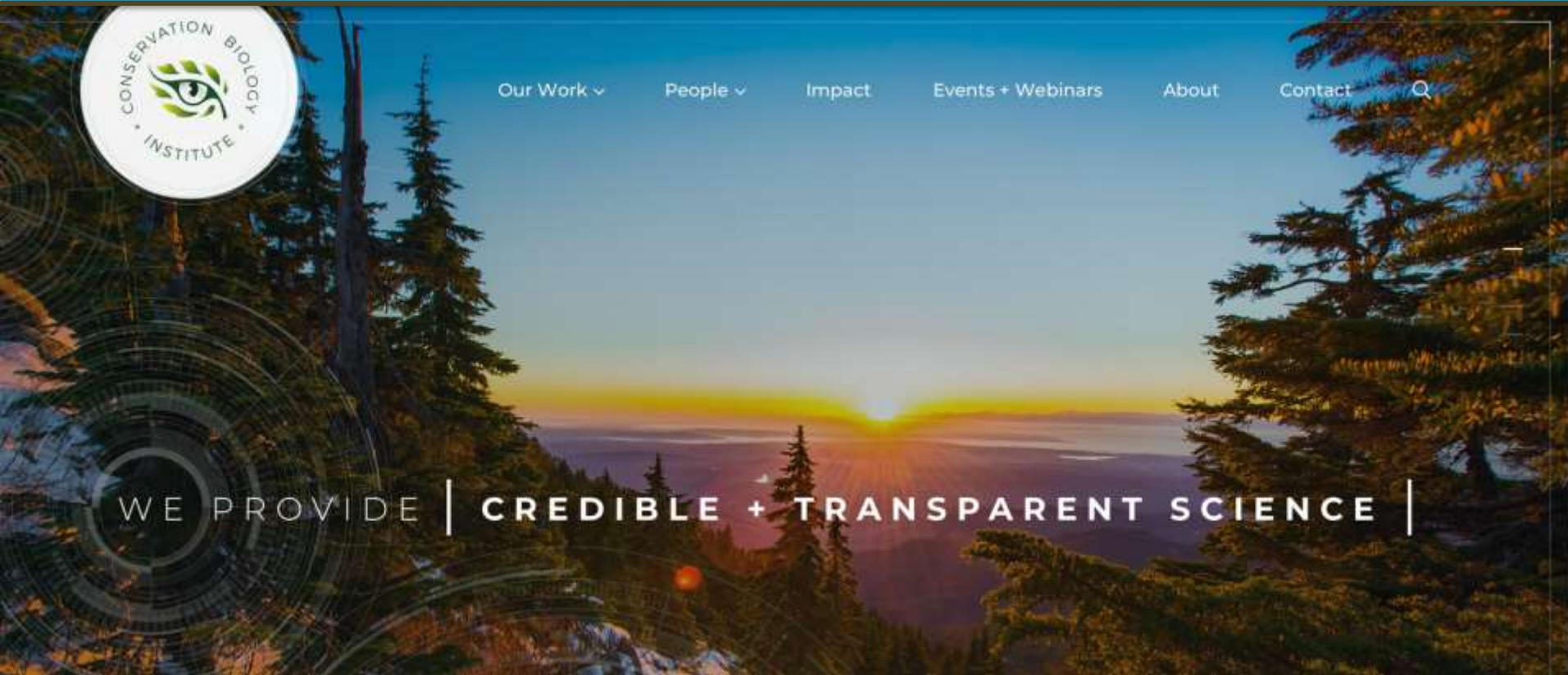
Conservation Biology Institute



James R. Strittholt, Ph.D.
President/Executive Director
Conservation Biology Institute
136 SW Washington Ave., Suite 202
Corvallis, OR 97333
www.consbio.org

stritt@consbio.org

Conservation Biology Institute



- **Science-based non-profit founded in 1997**
- **Main office in Corvallis with satellite staff in CA, WA and AZ**

Conservation Biology Institute



[Our Work](#) ▾

[People](#) ▾

[Impact](#)

[Events + Webinars](#)

[About](#)

[Contact](#)



WE TRANSLATE | SCIENCE INTO CONSERVATION ACTION |



- **Currently have 28 staff + fellows**
- **Focus is North America - expanding into other parts of the world**

Conservation Biology Institute



[Our Work](#) ▾

[People](#) ▾

[Impact](#)

[Events](#) • [Webinars](#)

[About](#)

[Contact](#)



WE EMPOWER | OUR PARTNERS |

- **Heavy emphasis on merging conservation science and technology**
- **Support from numerous and varied sources**



Conservation Planning + Management

We advance practical, effective, science-based planning strategies to protect and enhance native species, habitats, and ecosystems at global, regional, and local scales.

[Read more →](#)



Data Basin

Our flagship platform, Data Basin, enables thousands of people from multiple sectors to access, explore, analyze, and act on geospatial conservation data.

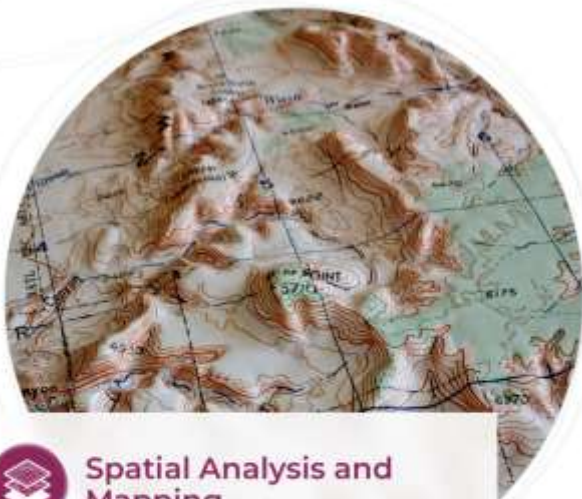
[Read more →](#)



Conservation Software Solutions

We develop innovative, visually compelling tools to help people better understand complex science issues and make better conservation and resource decisions.

[Read more →](#)



Spatial Analysis and Mapping

We empower our clients by providing spatial analysis and mapping products to help them visualize and communicate complex conservation issues.

[Read more →](#)



Scientific Research & Modeling

We provide customized modeling products for conservation, restoration, climate change adaptation, and natural resource management—all grounded in the best available science.

[Read more →](#)



Consultation, Facilitation & Training

We effectively translate the latest scientific research into real world solutions.

[Read more →](#)

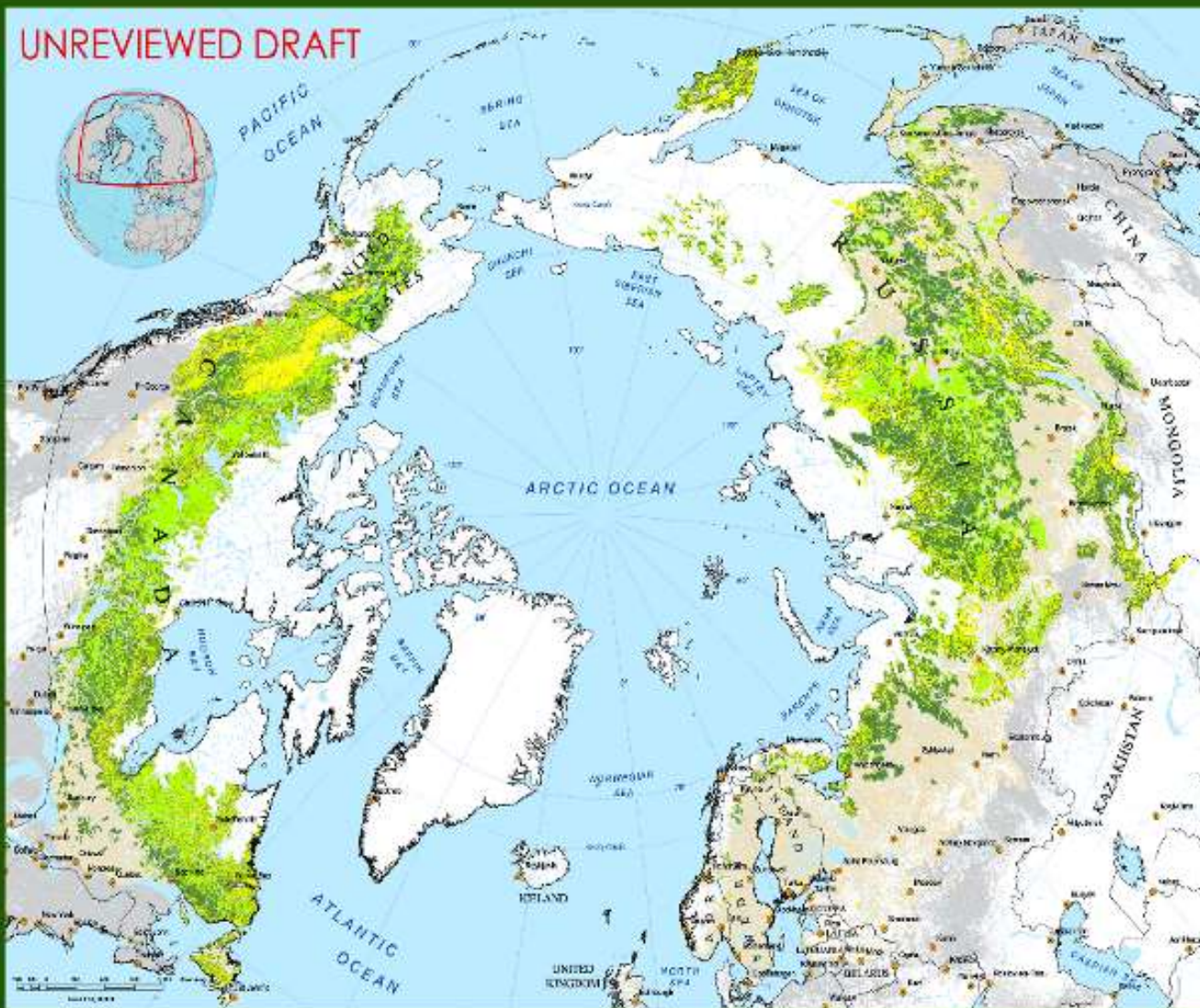
Funding





REMAINING WILDLANDS IN THE NORTHERN FORESTS

UNREVIEWED DRAFT



Boreal Wildlands are Important



The boreal Northern forest landscape is a mosaic of forest, open fields and wetlands stretching across a billion hectares on a North American. About one-third of the world's forest area is in the boreal region. Long, cold, snowy winters and short summers make the forest primarily coniferous, growing slowly. These landscapes are largely undisturbed, with few roads or logging tracks. They are a source of clean water, carbon sequestration, and biodiversity. In the boreal forest, the red spruce forest is a natural fire-prone area, as well as areas where large fires have occurred during the last 1000 years.

Conservation Opportunities



Intact forest landscapes offer exceptional conservation opportunities. They serve as natural corridors to connect strategies to protect landscapes, while providing the benefits of ecosystem goods and services. Conservation of such areas is a cost-effective way to protect biodiversity and ecosystem services.

Greater forest fragmentation, not shown on this map, is a serious problem. Development and land use increasing rapidly has increased fragmentation in many areas. Global monitoring efforts are needed to track the extent of the ecological change, as they focus on biodiversity. The Global Forest Watch (GFW) project has the capacity to address the information gap. Information could be used to inform the protection of boreal ecosystems. Maps such as this provide the information needed to meet the needs of the forest and to help forest and landscape protection.

GFW Pan-Boreal Mapping Initiative



This map is the first result of a project focused on strengthening government, nongovernmental, and academic institutions in 15 countries. It details how ground surveying is advanced and satellite mapping is used by institutions, and the work and technical process available to a total of 30 institutions. The scale of analysis is approximately 1:100,000, which is detailed enough to support ecosystem planning. The map may be large following further survey and review. Data were collected for Norway and other areas.

www.Globalforestwatch.org

COLLABORATORS



CONTRIBUTORS

Dr. Alexander K. Squires, Dr. Thomas F. Nelson, Dr. Hans-Martin Wegmann, Dr. Benjamin D. Bunker, Dr. J. Peter C. Leach, Dr. Michael P. O'Connell, Dr. Robert H. Taylor, Dr. Peter A. Venter, Dr. David J. Lindenmayer, Dr. Thomas J. White, Dr. Yehuda A. Yizraeli, and others.

DONORS

Donors include the United States Agency for International Development (USAID), the Bill & Melinda Gates Foundation, and others.

REVIEW INFORMATION

This map is a draft. It is not for publication. All comments are welcome. For more information, please contact: globalforestwatch@globalforestwatch.org.

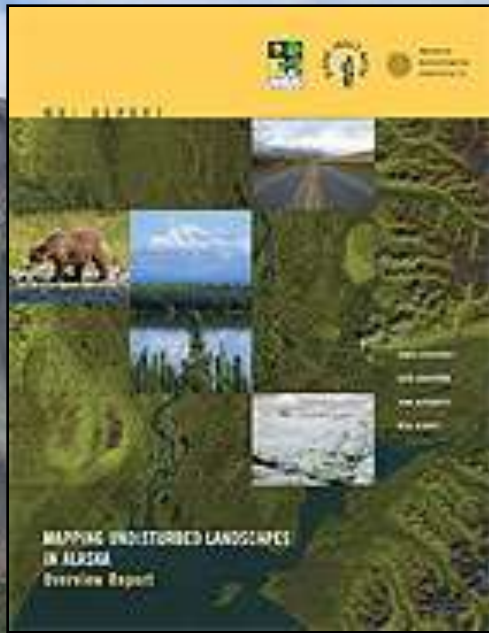
DATA SOURCES

Topographic maps and other data were used to help to define forest boundaries. Satellite imagery was used from 2000 to 2012. Data were collected from the Global Forest Watch (GFW) project. The data were collected from the Global Forest Watch (GFW) project. The data were collected from the Global Forest Watch (GFW) project.

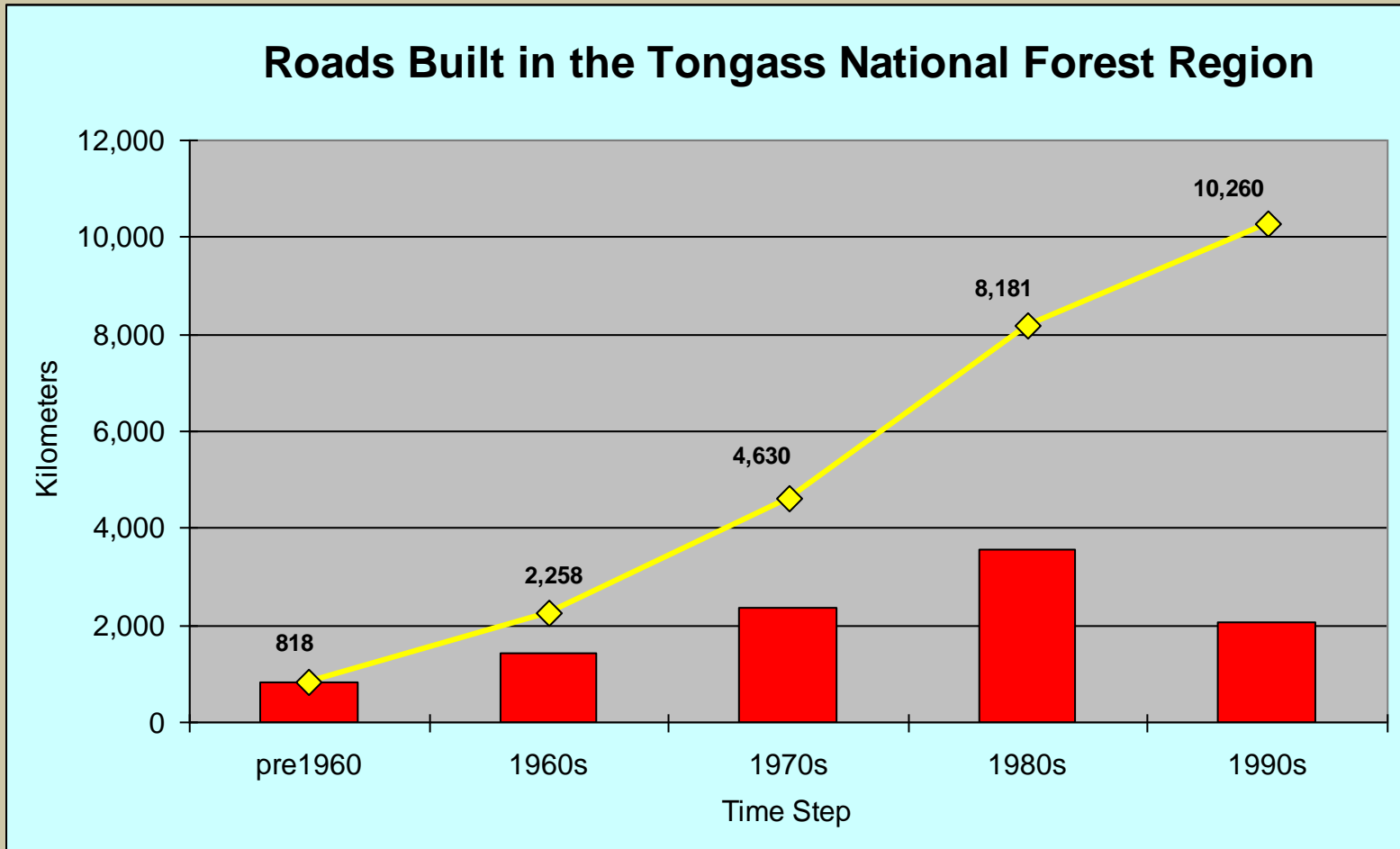
Coyote Valley Connectivity Project



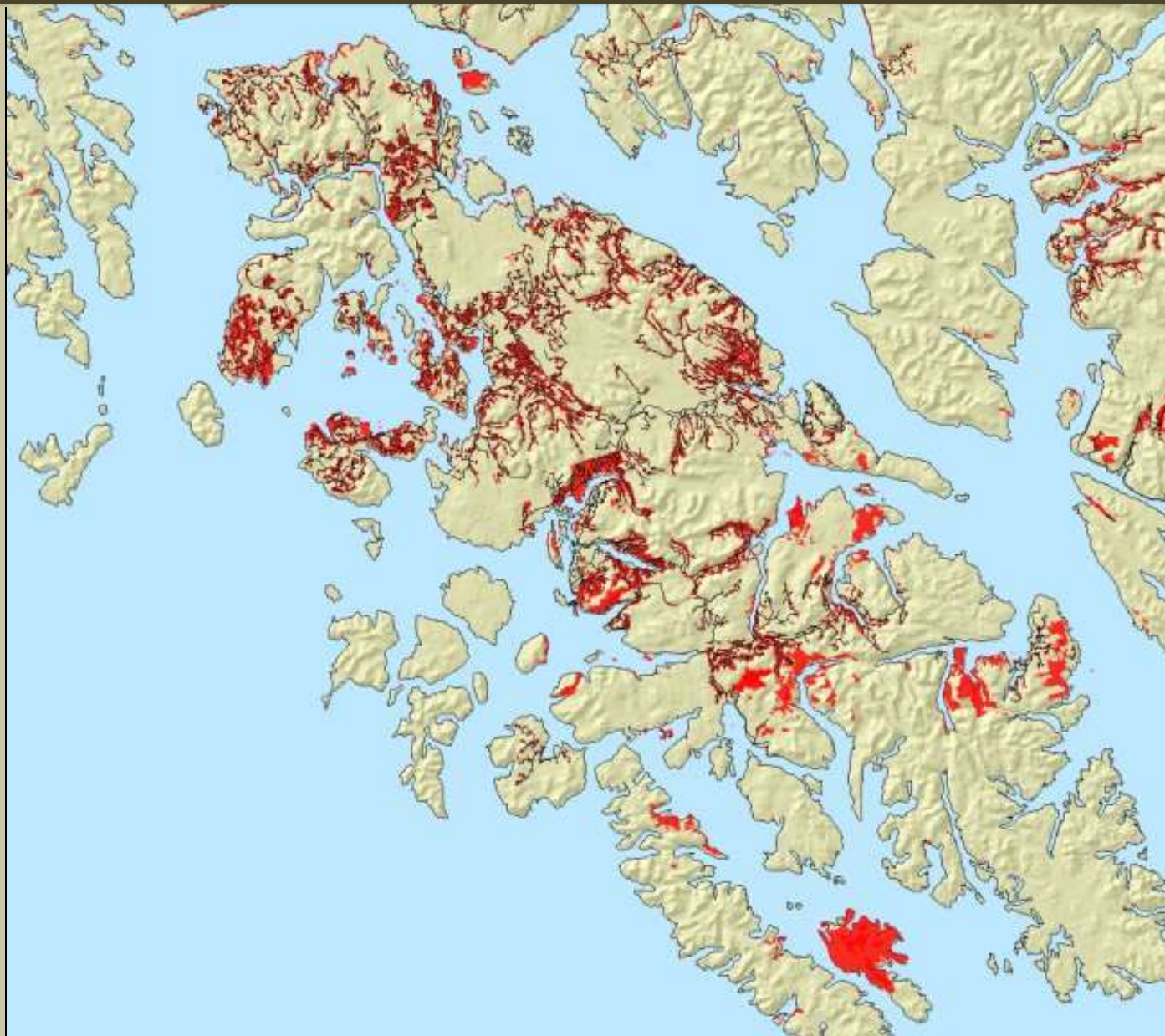
Mapping Undisturbed Landscapes in Alaska



Tongass National Forest, Alaska



Southeast Alaska – Change Analysis



Victoria's Secret Dirty Secret Campaign

VICTORIA'S SECRET

Some companies get a tree for the holidays. Victoria's Secret is taking a whole forest.

Each day, Victoria's Secret mails more than a million catalogs—most of which are printed on paper that makes them indigestible for people and angrier than...

To get all these catalogs, we're using massive amounts of paper. That's why we're looking for a sustainable way to print our catalogs. The Forest Ethic is a paper made from recycled paper and other sustainable materials. It's a paper that's good for the planet and good for the people who use it.

Get involved in ForestEthics to reinvigorate the catalog. Visit www.ForestEthic.com

FOREST ETHICS

Because protecting forests is one year's business.

VICTORIA'S DIRTY SECRET

Victoria's Secret mails out more than a million catalogs a day, and the cost of these catalogs isn't sexy—they're printed on paper made from some of the world's last remaining Endangered Forests.

Victoria's Secret built an international full-service catalog when it came to marketing when its catalog came first. They are printed on paper from the Cascade Range, a forest wilderness larger than the Florida peninsula. And most of the paper that Victoria's Secret uses comes directly from forests. Some harvested sustainably for centuries, Victoria's Secret has donated 10% of its earnings on a paper with high acid content. This is bad for the environment and the company can't do much more.

The Cascade Range is a key buffer protecting us from global warming and is home to rare fish, a wild salmon population, and a wide variety of other wildlife. It's also a source of clean water and a source of jobs. It's also a source of clean water and a source of jobs. It's also a source of clean water and a source of jobs.

If Victoria's Secret were to be eliminated in marketing, environmentally-sustainable paper from its suppliers. Paper as it is to be eliminated. It would contribute to the loss of the remaining paper forests.

Get involved in ForestEthics to reinvigorate the catalog. Visit www.ForestEthic.com

FOREST ETHICS

Because protecting forests is one year's business.



One million catalogs a day. Ample forest destruction.

INSIDE
Forests stripped down... to many nothing getting rid of those angry endangered species.

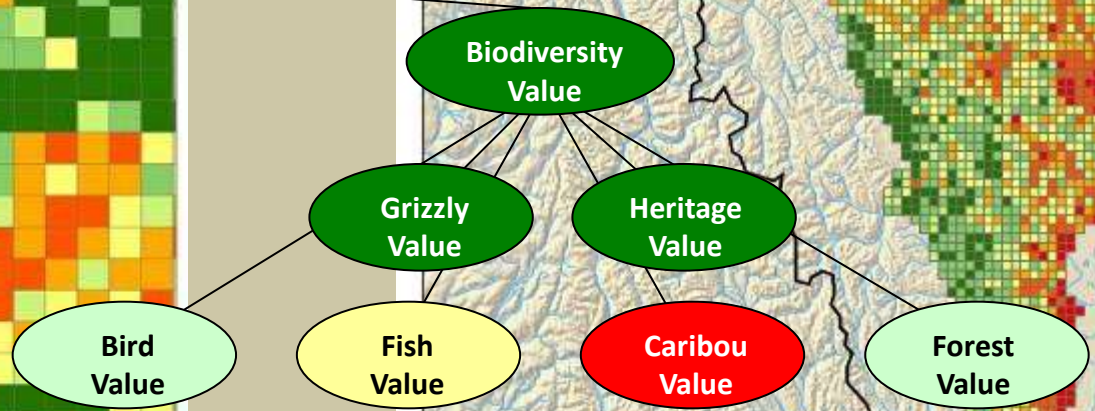
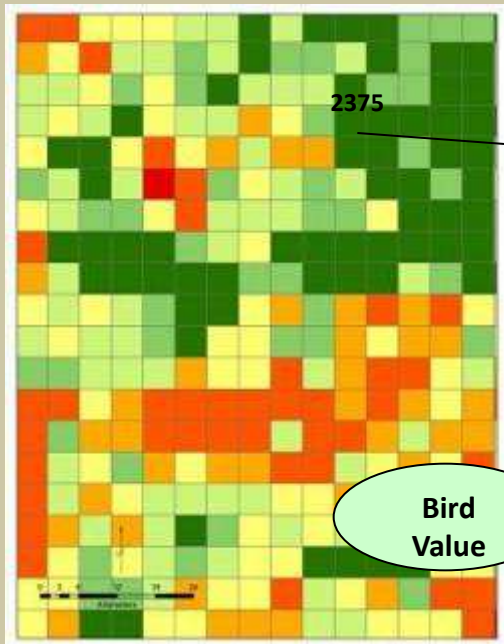
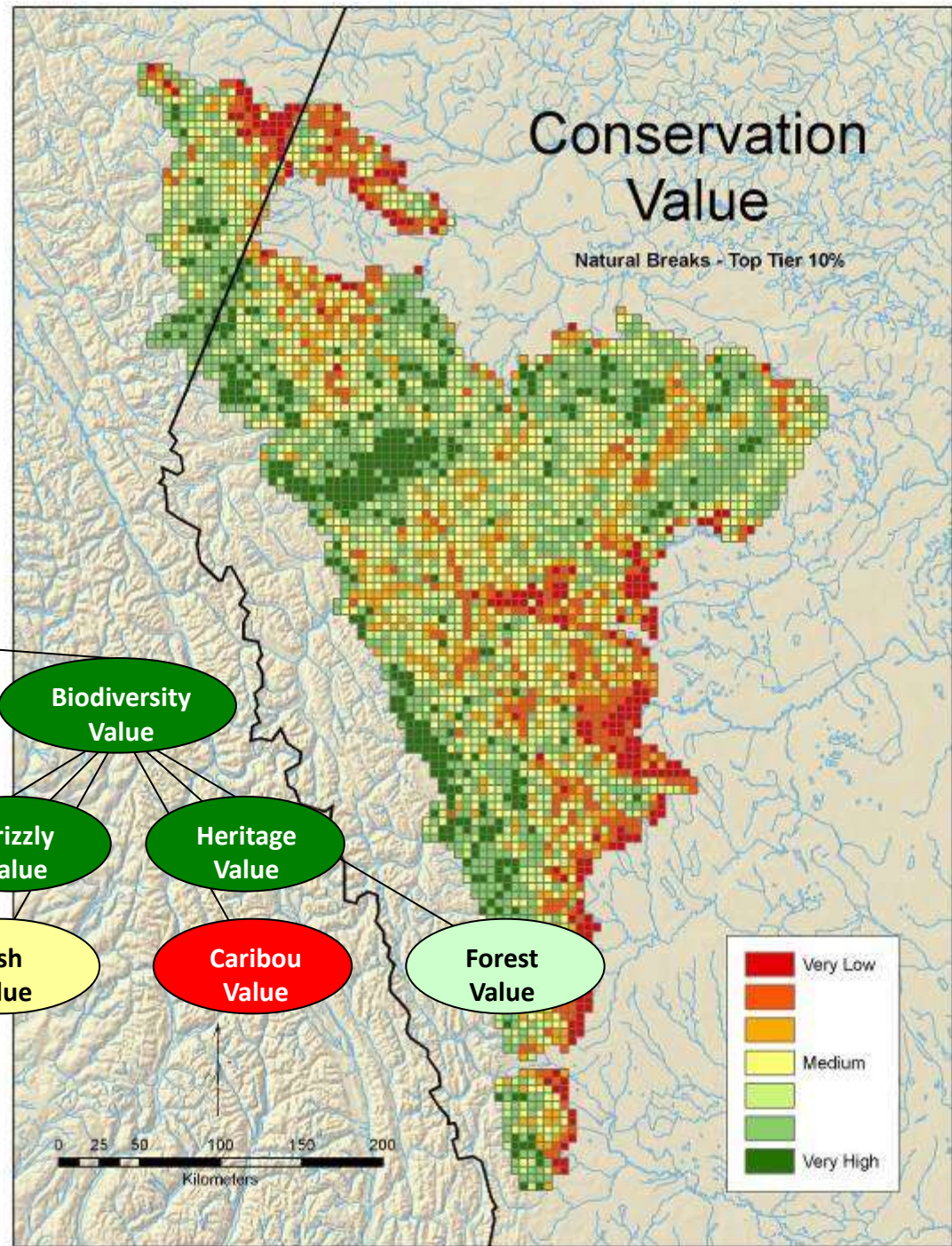
WE'RE OH-SO-SUPPORTIVE OF
global warming

If Victoria's Secret wants to be revealing, they should tell you what their catalogs do to the environment.

By printing over a million catalogs a day, mostly on non-recycled paper, Victoria's Secret is destroying North America's Great Smoky Forest—one of our last trees of defense against global warming. To find out more, visit www.victoriassecret.com

ETHICS

Victoria's Secret is committed to environmental responsibility. We are proud to be a member of the Forest Ethic, a paper made from recycled paper and other sustainable materials. It's a paper that's good for the planet and good for the people who use it.



Victoria's Dirty Secret Outcome



Edmonton Journal -- Victoria's Secret goes green

Environmentalists convince lingerie catalogue printer to drop Hinton pulp

by Hanneke F
December 7th

EDMONTON - Environmentalists convinced the lingerie catalogue printer to drop Hinton pulp from its catalogues.

Limited Brand Inc. said it will stop using pulp from the 350 million catalogues printed each year.

"The growing concern over the growing we want to see in the endangered species philanthropy fund."

The company campaign, which protecting an full-page advertisement in the catalogues.

Katzenmeyer said that by the end of the year, the company will be using two parties for its catalogues.

"We were not had to do to get the company also ensure that made from pulp only standard year. Already, post-consumption recycling of all pulp supplied to temperate rain forests."

The company also ensure that made from pulp only standard year. Already, post-consumption recycling of all pulp supplied to temperate rain forests."

Katzenmeyer said that by the end of the year, the company will be using two parties for its catalogues.

Toronto Star -- Victoria's Secret going green

Tembec, Domtar, caribou all stand to benefit

by Peter Gorrie
December 7th, 2006

After two years of spar the Victoria's Secret catalogue from sustainably managed forests.

The decision could boost the campaign to protect an forest.

Ohio-based Limited Brands said that by the end of sends out each year with operations certified by the council.

The council is an intern appropriate, socially beneficial forests.

Limited Brands promise targets.

It also said it would no logging operations in the environmentally unfriendly worth about \$100 million.

Financial Post -- Victoria's Secret spurns West Fraser

Lingerie vendor stops using its pulp for its catalogues

December 7th, 2006

VANCOUVER - An environmental group may tarnish the industry's company's financials, and stop printing its catalogues.

"It's negative press for West impact on tonnes shipped Desjardins Securities in Montreal in the short term, it's going to be a problem."

The long-term impact could leverage the high-profile Victoria's Secret, into products certified to the stringent standards (FSC).

Yesterday, Limited Brands operations, begin using 1 pulp supplied by West Fraser of lobby group Forest Ethics.

Over the last two years, part of its "Victoria's Dirty the paper in the company."

Forest Ethics has accused caribou habitat, a charge saying it has tempered by the company.

Wall Street Journal -- Victoria's Secret Goes Green On Paper for Catalogs

by Amy Merrick
December 7th, 2006

After enduring protests by an environmental group over the past two years, Victoria's Secret will stop using catalog paper made with pulp from a Canadian forest that is an important wildlife habitat and will move toward buying paper certified by a group that scrutinizes logging practices.

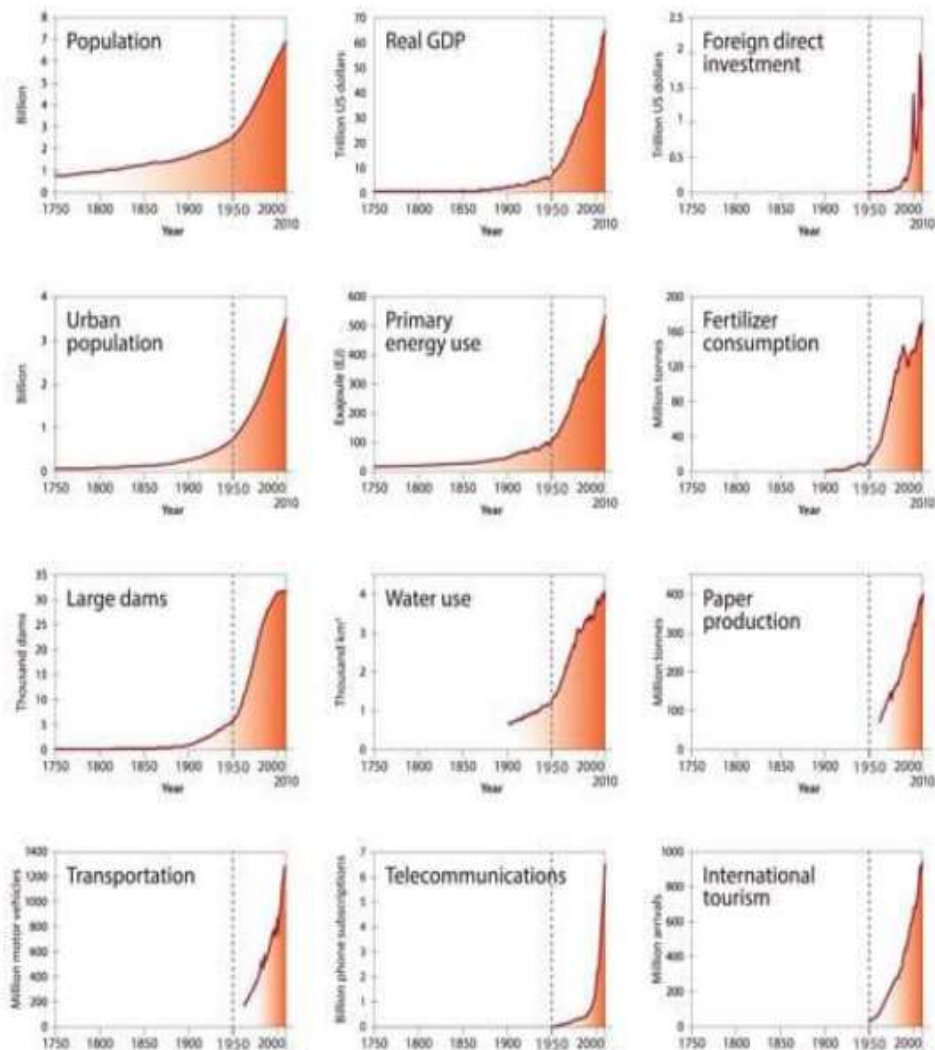
Because Victoria's Secret mails about 350 million catalogs a year, its moves are likely to have a ripple effect on paper mills and across the rest of the catalog industry. ForestEthics, the nonprofit group that targeted the retailer, said it will immediately turn its attention to other large retailers that it believes haven't made adequate environmental commitments.

Limited Brands Inc., the parent company of Victoria's Secret, said its catalogs will no longer use pulp from the inland temperate rain forest in British Columbia or from the Rocky Mountain foothills of Alberta. The latter area is part of the boreal forest, a critical habitat for many species, including woodland caribou, which biologists say have been imperiled by the spread of logging and other industries across Canada's evergreen forests.

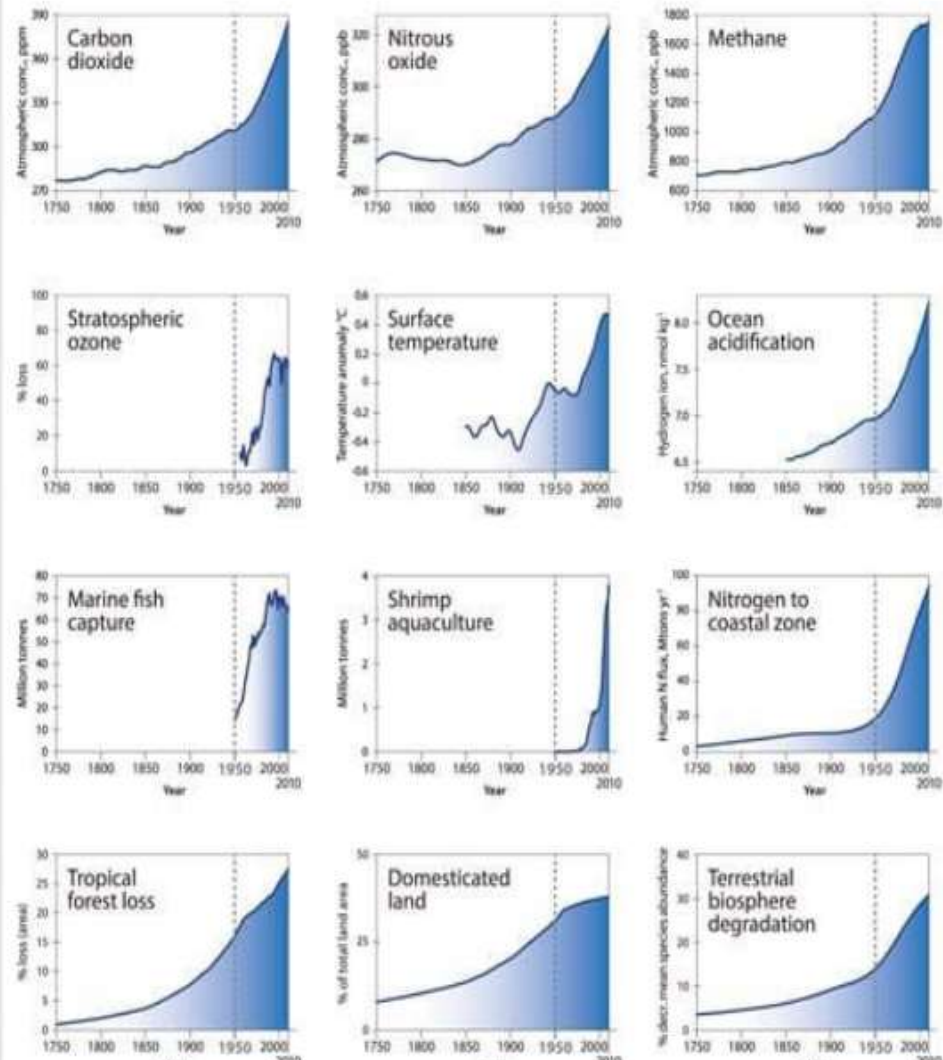
A 10% Starting Point

The Great Acceleration

Socio-economic trends



Earth system trends



How many earths do we need?



2020

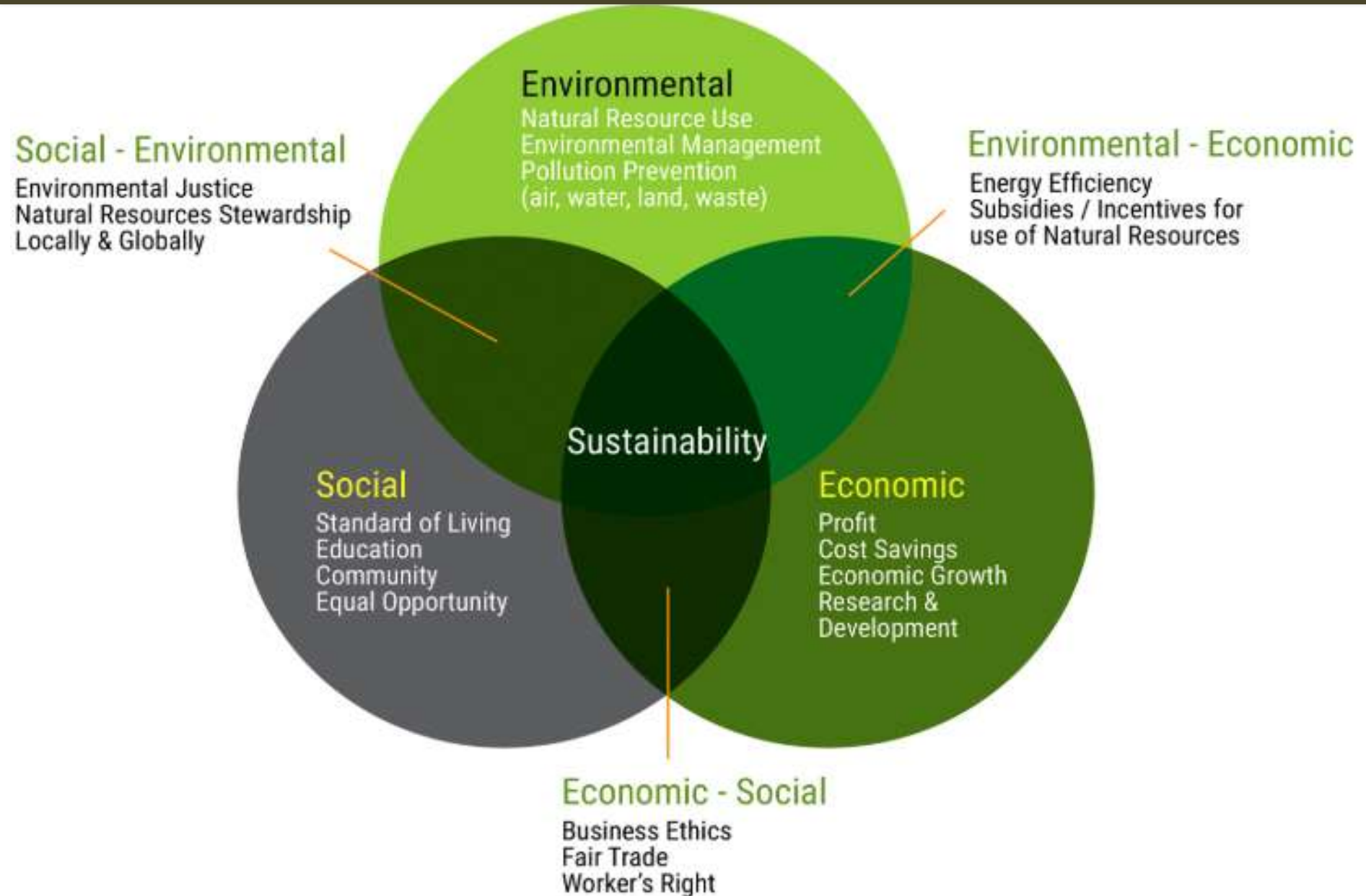


If the entire world lived like Europeans



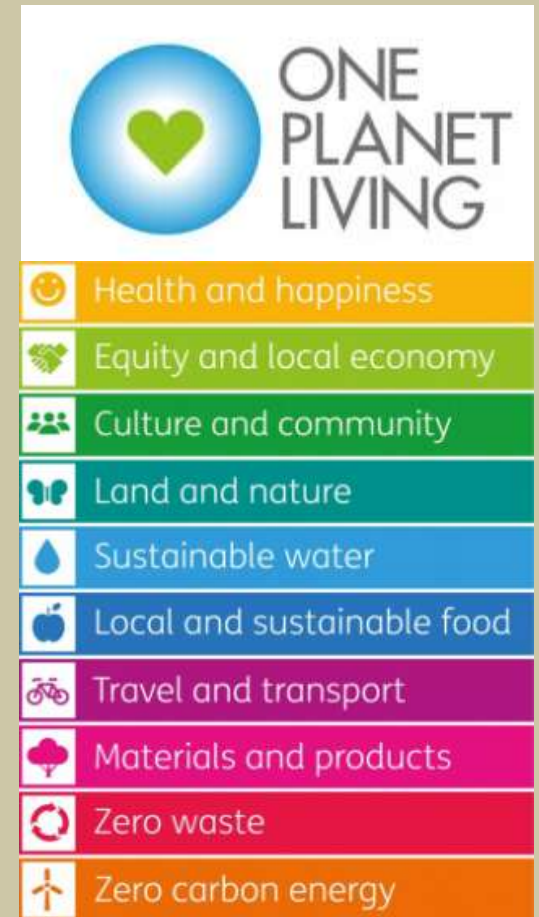
If the entire world lived like Americans

Ecological Sustainability

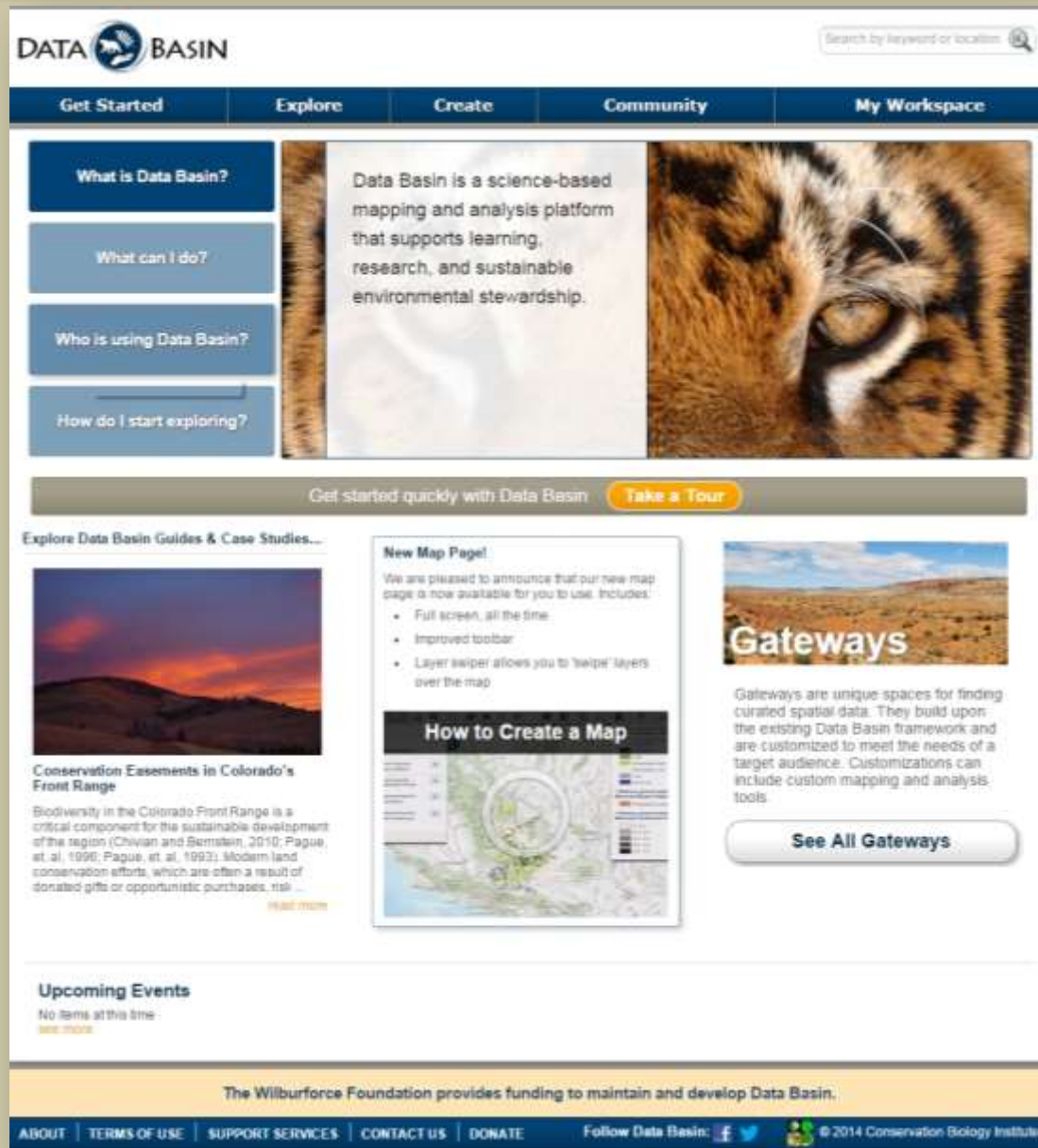


Ecological Sustainability

SUSTAINABLE DEVELOPMENT GOALS



A web-based mapping and analysis platform that enhances knowledge sharing by integrating science, mapping and people



The screenshot shows the Data Basin website interface. At the top left is the Data Basin logo. To its right is a search bar with the text "Search by keyword or location". Below the logo and search bar is a navigation menu with five items: "Get Started", "Explore", "Create", "Community", and "My Workspace". The main content area is divided into several sections. On the left, there are four blue buttons: "What is Data Basin?", "What can I do?", "Who is using Data Basin?", and "How do I start exploring?". In the center, there is a large image of a tiger's face with the text "Data Basin is a science-based mapping and analysis platform that supports learning, research, and sustainable environmental stewardship." Below this is a "Take a Tour" button. To the right of the tiger image is a large image of a globe. Below the globe is a "See All Gateways" button. At the bottom of the page, there is a footer with the text "The Wilburforce Foundation provides funding to maintain and develop Data Basin." and a navigation bar with links for "ABOUT", "TERMS OF USE", "SUPPORT SERVICES", "CONTACT US", "DONATE", and social media icons for Facebook, Twitter, and YouTube. The footer also includes the text "Follow Data Basin:" and "© 2014 Conservation Biology Institute".

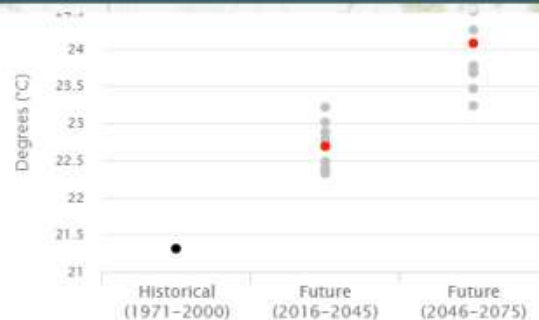
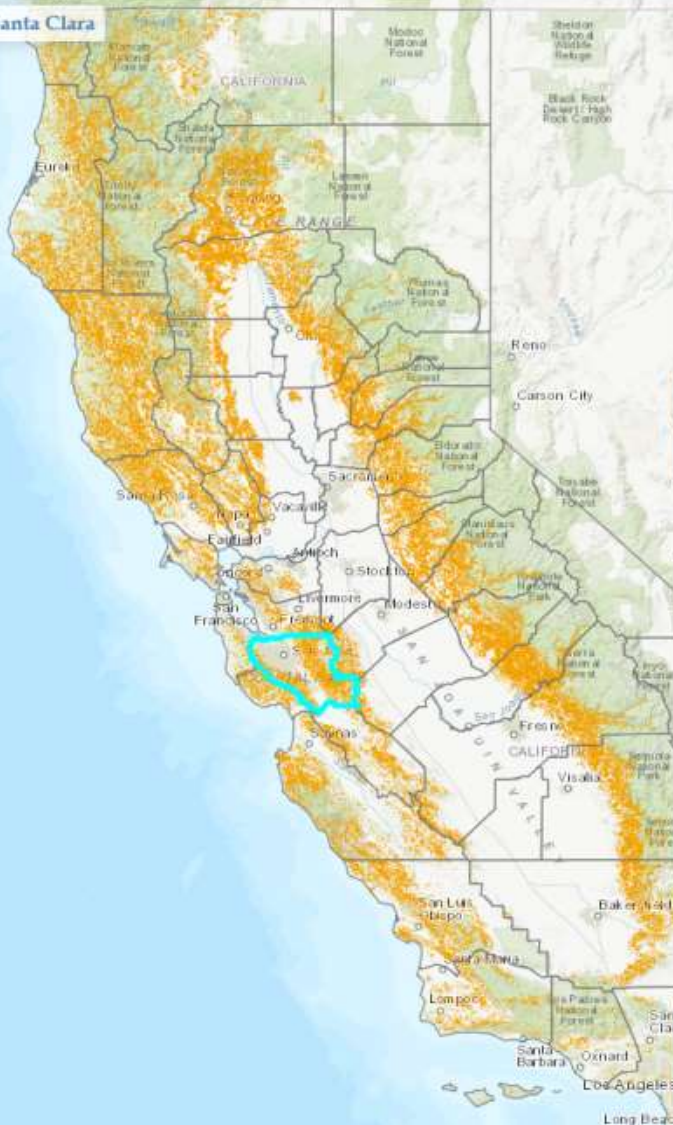


App - Climate Console

California Climate Console

Map About User Stories

Currently Selected: Santa Clara



modeled projections for various future time periods. Each point represents a different climate model.

Click any point to toggle the corresponding map layer on/off in the map.



[Learn more...](#)

Climate Projection Summaries

Bioclimatic Departure & Vegetation Outlook

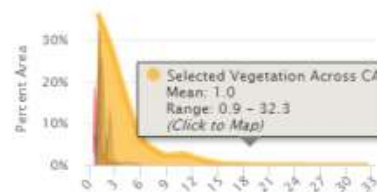
Select a Vegetation Type: California Foothill and Valley Forests and Woodlands

[Learn more...](#)

nth (mm)
low (Z=0.1)
Z=2.5)

Precipitation of the Driest Month (mm)

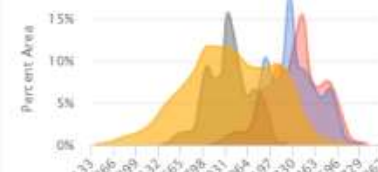
- ▲ Bioclimatic Departure is Low (Z=-0.6)
- ▲ Bioclimatic Departure is Low (Z=-0.8)



- Historical (1971 - 2000)
- Future (2046 - 2075, HadGEM2-ES (Hot/Dry))
- Future (2046 - 2075, CanESM2 (Hot/Wet))
- California Foothill and Valley Forests and W...

Climatic Water Deficit (mm)

- ▲ Bioclimatic Departure is High (Z=3.0)
- ▲ Bioclimatic Departure is High (Z=2.8)



- Historical (1971 - 2000)
- Future (2046 - 2075, HadGEM2-ES (Hot/Dry))
- Future (2046 - 2075, CanESM2 (Hot/Wet))
- California Foothill and Valley Forests and W...

Site Condition & Climate Exposure

Projected Land Cover Change

Projected Change in Carbon, Fire, and Water

California Foothill and Valley Forests and Woodlands

100 km
100 mi

App-Regional Conservation Assessment DATA BASIN



RePlan: Regional Conservation and Development Planning Tool

Tool Overview

About the Data

Start over

Save URL for Future Use

Regional Conservation Assessment

Weighted Conservation Target Models

Your selected region of interest intersects the following ecoregions with Regional Conservation Assessment (RCA) weighted conservation target models. You can explore any of three provided models: (1) All conservation targets, (2) Conservation targets with legal status, and (3) Scientifically defined conservation targets. Or you can create your own custom model by clicking on the *Customize* button.

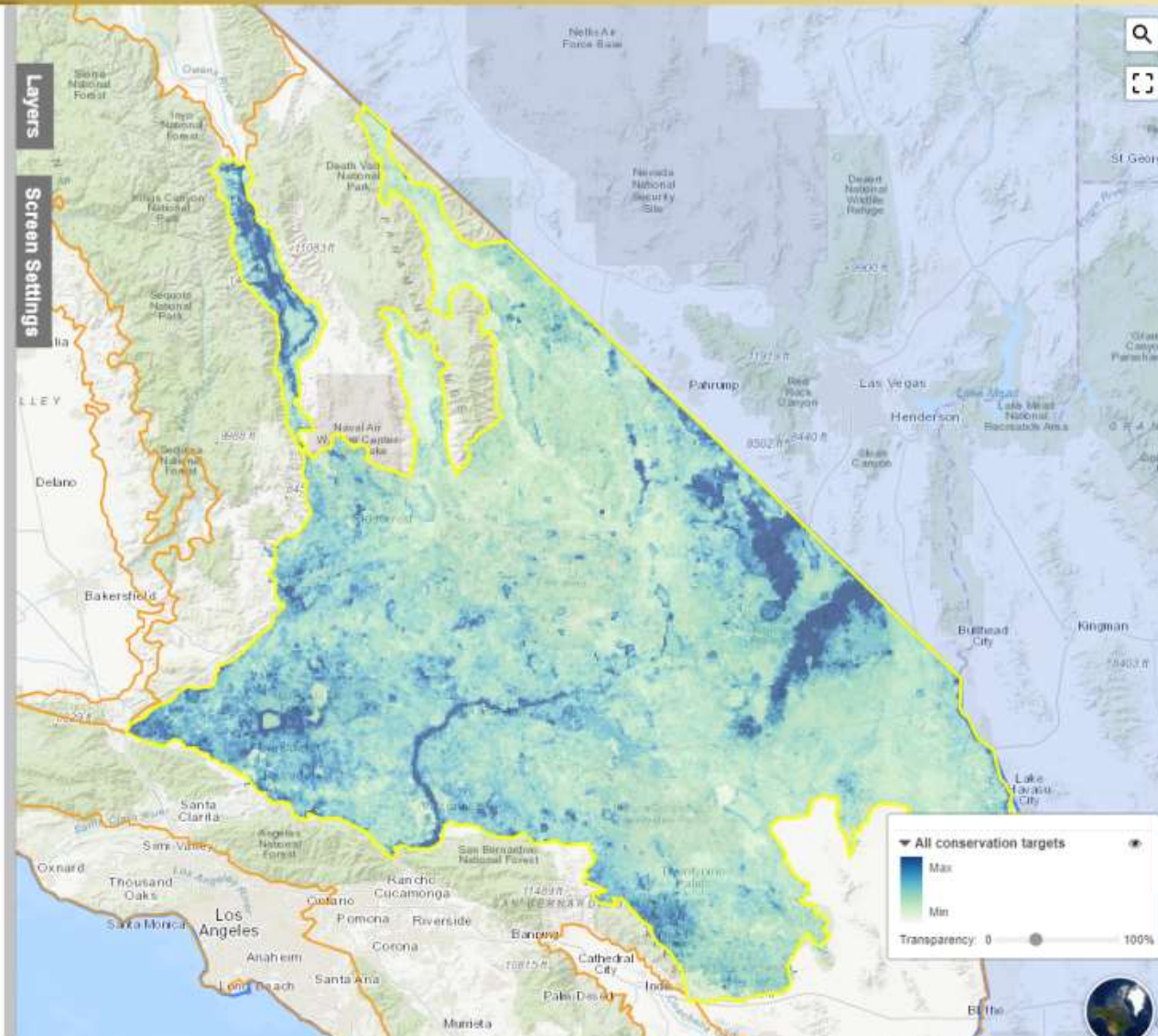
You may query targets listed for each cell by clicking on the "I" icon next to the model name you wish to explore from the listing below or from the same listing under the Layers tab. Click on the map to identify what conservation targets may be present at that location.

Click on *Screen the Landscape* or *Draw or Import Sites* for Analysis below to continue your analytical work.

Mojave

Customize

- All weighted conservation targets
- Weighted conservation targets with legal status
- Weighted scientifically defined conservation targets



Apps - Seedlot Selection Tool

The screenshot shows the Seedlot Selection Tool web application. The interface is divided into a left sidebar with configuration options and a main map area. The sidebar includes sections for 'About', 'Tool', 'Layers', and 'Saved Runs'. The 'Tool' section contains dropdown menus for time periods (1961-1990, 2041-2070), a climate scenario (RCP8.5), a transfer limit method (Zone), a species (Generic), and a zone (Oregon (1966/1973) Zone 252, 501' - 1000'). The 'Select climate variables' section shows units (Metric, Imperial) and a table of variables: MAP (75.5 in, 37.7 in), SHM (125.5, 43.6), and MAT (55.2 °F, 1.62 °F). The 'Apply constraints' section shows a table with 'Douglas-fir' and a value of '1961 - 1990'. The 'Map your Results' section has a 'Run Tool' button and 'Save Last Run' and 'Export As...' options. The main map area displays a topographic map of the Pacific Northwest region, with a green shaded area indicating the selected seedlot. A legend in the bottom right corner shows a color scale for 'Match' from Low (yellow) to High (red).

Seedlot Selection Tool

Purpose Instructions More Information People News & Updates Report an Issue Account

About Tool Layers Saved Runs

1961 - 1990

When should trees be best adapted to the planting site?

2041 - 2070 RCP8.5

5 Select transfer limit method

Custom Zone

Select a species

Generic

Select zone

Oregon (1966/1973) Zone 252, 501' - 1000'

6 Select climate variables

Units: Metric Imperial

Name	Center	Transfer limit (+/-)
MAP	75.5 in	37.7 in
SHM	125.5	43.6
MAT	55.2 °F	1.62 °F

Add a variable...

7 Apply constraints

Name	Value	Range (+/-)
Douglas-fir	1961 - 1990	

Select...

8 Map your Results

Run Tool

Save Last Run Export As...

Match

High Low

Ecological Models

Statistics | Data Basin | EEMS Online

eemsonline.org

EEMS ONLINE

Home About Contact LOGIN

1 Select a model: **PNW Potential Climate Impacts**

2 Explore and modify the model below

Model Description: Potential Climate Impacts for the Pacific Northwest based on site sensitivity and climate exposure. [Learn more...](#)

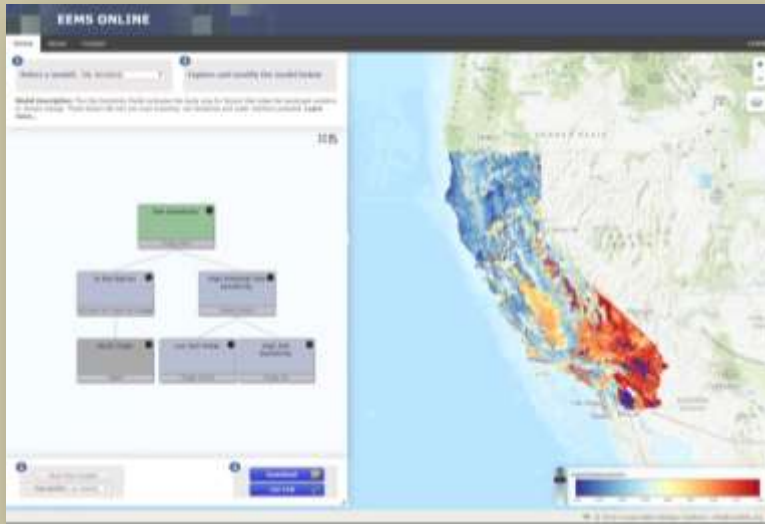
```
graph TD; A[Preliminary Potential Climate Impacts are High] --- B[Is Not Barren]; A --- C[Potential Site Sensitivity is High]; A --- D[Climate Exposure is High]; C --- E[Soil Water is Low]; C --- F[Soil Sensitivity is High]; B --- G[Fuzzy Union]; C --- G; D --- H[Fuzzy Or]; E --- I[Fuzzy Union]; F --- I;
```

3 Run the model
Map Quality: Low (Fast)

4 Download Get Link

© 2019 Conservation Biology Institute | info@consbio.org

Integration



Models

Applications

Workbench Platform

DATA BASIN

Get Started Explore Create Community My Workspace

What is Data Basin?
What can I do?
Who is using Data Basin?
How do I start exploring?

Your Market quickly with Data Basin: [Take a Tour](#)

Explore Data Basin Guides & Case Studies...

How Map Page?
We are interested in someone that can create maps that are more suitable for city to use. Includes:
- Full screen, all the time
- Automated routing
- Layer selection with the click to be able to zoom over the map

How to Create a Map

Gateways
Gateways are simple operators for finding certain spatial data. They build upon the existing Data Basin framework and are implemented to meet the needs of a target audience. Customizations can include custom mapping and analysis tools.

See All Gateways

One Planet-Data Basin Integration

